



**PLAFOND**  
**PLAST** SRL

# listino prezzi *price list*

**01/2022**

**pressione, fognatura, edilizia**  
*pressure, sewage, building*

all around the world

**Tubi in PVC UNI EN 1452-2 per condotte di fluidi in pressione**, rispondenti alle prescrizioni igienico-sanitarie del Ministero della Sanità (D.M. 174 del 6 aprile 2004).

Colore: grigio RAL 7011 - Lunghezza totale compreso bicchiere: 6 m. Le barre sono fornite con bicchiere ad anello elastomerico o lisce, solamente su richiesta.

**Pipes of rigid PVC UNI EN 1452-2 for pressure use conforming to the sanitary rule of Ministry of Health (M.D. 174 of the 6 april 2004).**

Color: gray RAL 7011 - Total length: 6 meters. Pipes are available with rubber gasket or plain ends only on request.

Diametro esterno Outside Diameter mm	PN6 (SDR 33)		PN10 (SDR 21)		* PN12,5 (SDR 17)		PN16 (SDR 13,6)		* PN20 (SDR 11)		Guarnizioni Gasket prezzo netto net price €/cad.
	Spessore Thickness mm	€/ m	Spessore Thickness mm	€/ m	Spessore Thickness mm	€/ m	Spessore Thickness mm	€/ m	Spessore Thickness mm	€/ m	
** 16	-	-	-	-	-	-	-	-	1,5	<b>0,98</b>	-
** 20	-	-	-	-	-	-	1,5	<b>1,18</b>	1,9	<b>1,45</b>	-
25	-	-	-	-	-	-	1,9	<b>1,83</b>	2,3	<b>2,21</b>	-
32	-	-	1,6	<b>1,49</b>	1,9	<b>1,73</b>	2,4	<b>2,09</b>	2,9	<b>2,47</b>	-
40	1,5	<b>1,65</b>	1,9	<b>2,01</b>	2,4	<b>2,54</b>	3,0	<b>2,99</b>	3,7	<b>3,61</b>	-
50	1,6	<b>2,21</b>	2,4	<b>3,15</b>	3,0	<b>3,90</b>	3,7	<b>4,62</b>	4,6	<b>5,65</b>	-
63	2,0	<b>3,40</b>	3,0	<b>4,88</b>	3,8	<b>6,21</b>	4,7	<b>7,35</b>	5,8	<b>8,94</b>	0,23
75	2,3	<b>4,71</b>	3,6	<b>6,99</b>	4,5	<b>8,93</b>	5,6	<b>10,43</b>	6,8	<b>12,53</b>	0,29
90	2,8	<b>6,51</b>	4,3	<b>9,17</b>	5,4	<b>11,41</b>	6,7	<b>13,68</b>	8,2	<b>16,42</b>	0,39
	PN6 (SDR 41)		PN10 (SDR 26)		PN12,5 (SDR 21)		PN16 (SDR 17)		* PN20 (SDR 13,6)		
110	2,7	<b>7,77</b>	4,2	<b>11,11</b>	5,3	<b>13,93</b>	6,6	<b>16,78</b>	8,1	<b>20,51</b>	0,57
125	3,1	<b>10,17</b>	4,8	<b>14,29</b>	6,0	<b>17,71</b>	7,4	<b>21,40</b>	9,2	<b>26,41</b>	0,68
140	3,5	<b>12,74</b>	5,4	<b>18,03</b>	6,7	<b>22,56</b>	8,3	<b>26,87</b>	10,3	<b>33,09</b>	0,82
160	4,0	<b>16,49</b>	6,2	<b>23,63</b>	7,7	<b>29,58</b>	9,5	<b>35,07</b>	11,8	<b>43,21</b>	1,05
180	4,4	<b>20,55</b>	6,9	<b>29,46</b>	8,6	<b>38,05</b>	10,7	<b>44,41</b>	13,3	<b>53,71</b>	1,38
200	4,9	<b>25,25</b>	7,7	<b>36,54</b>	9,6	<b>46,03</b>	11,9	<b>54,82</b>	14,7	<b>67,36</b>	1,48
225	5,5	<b>31,94</b>	8,6	<b>45,91</b>	10,8	<b>58,10</b>	13,4	<b>69,53</b>	16,6	<b>85,31</b>	2,34
250	6,2	<b>40,08</b>	9,6	<b>56,99</b>	11,9	<b>71,09</b>	14,8	<b>85,38</b>	18,4	<b>103,69</b>	2,58
280	6,9	<b>49,77</b>	10,7	<b>71,24</b>	13,4	<b>89,67</b>	16,6	<b>107,52</b>	20,6	-	3,75
315	7,7	<b>62,63</b>	12,1	<b>90,93</b>	15,0	<b>112,26</b>	18,7	<b>136,41</b>	23,2	-	4,62
355	8,7	<b>82,85</b>	13,6	<b>121,08</b>	16,9	<b>149,89</b>	21,1	<b>182,95</b>	26,1	-	6,31
400	9,8	<b>105,32</b>	15,3	<b>154,02</b>	19,1	<b>192,22</b>	23,7	<b>231,82</b>	29,4	-	7,70
500	12,3	<b>166,71</b>	19,1	<b>242,32</b>	23,9	<b>301,77</b>	29,7	<b>360,38</b>	36,8	-	-
630	15,4*	<b>259,10</b>	24,1*	<b>443,91</b>	30,0*	<b>473,17</b>	-	-	-	-	-

\* solo su richiesta / only on request



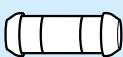
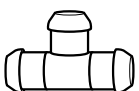
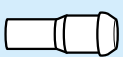
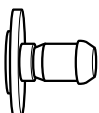
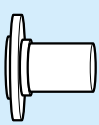
\*\* tubo liscio senza bicchiere / straight pipe without socket

## Raccordi di PVC rigido per condotte di fluidi in pressione PN 10.

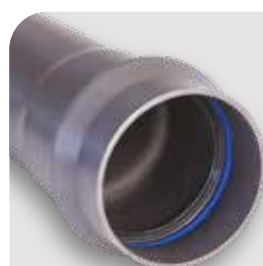
Bicchiere con anello elastomerico.

## Rigid PVC pipe fittings for water pipes of working fluids PN 10.

Socket with elastomeric ring.

	per tubi Ø for pipes Ø	63	75	90	110	125	140	160	180	200	225	250	280	315
	curve a 11° - 22° - 30° - 45° bends 11° - 22° - 30° - 45°	€ 17,60	21,49	29,65	41,23	56,04	71,56	96,11	222,88	209,15	306,52	404,75	576,73	684,02
	curve a 90° bends 90°	€ 18,19	22,25	31,66	50,85	66,20	92,43	114,12	254,91	263,62	360,41	446,52	856,25	1.086,14
	manicotto scorrevole sliding coupling	€ 12,36	15,67	18,34	23,96	27,89	35,37	48,12	66,79	77,60	105,82	139,54	186,57	249,27
	T1 90° Tee 90°	€ 43,24	56,44	68,47	90,05	133,11	164,62	201,57	387,29	430,76	507,98	741,84	1.022,39	1.401,59
	riduzione reducer	€ -	-	25,90	29,99	41,57	86,56	105,48	-	133,64	-	-	-	-
	** monogiunto flangiato flanged adaptor	€ 26,70	34,27	42,60	57,88	85,69	97,78	120,89	352,28	196,61	238,26	319,09	439,13	495,93
	** adattatore maschio flangiato flanged spigot	€ 22,63	30,76	36,63	50,35	76,84	89,00	105,51	292,77	174,13	220,25	280,36	398,40	410,69
	tubi per bancale n° pipes for pallets n°	224	149	104	72	56	42	42	36	30	25	20	16	12

\*\* Foratura UNI 2223 - Drilled UNI 2223



## PLAFONDPRESS

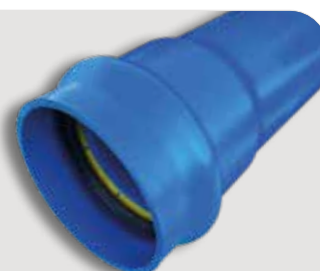
I nostri tubi in PVC UNI EN 1452-2 sono corredati di guarnizione elastomerica pre-inserita.

Each pipe is complete with rubber sealing ring.

PVC - NORMA  
UNI EN 1452-2



N. 650/001



## Plafondpress PLUS

Anello di tenuta anger-lock bloccata e a richiesta.  
Power-lock montata a caldo.

Integrated ring: Anger-lock.

Power-lock: pre-inserted with heating process.



**PLAFOND**  
**PLAST** SRL

43010 Roccabianca  
Parma - Italy  
Strada Padana, 6  
Tel. +39 0521 876430-876035  
fax +39 0521 876110  
info@plafondplast.com  
www.plafondplast.com

